



Adobe Creative Cloud Home Use for Faculty and Staff

About

Updated July 20, 2022.

The steps below show how to download, install and sign-in to the Adobe Creative Cloud on a personal device, such as a laptop or home compute, using your RSCCD employee email address.

Adobe Creative Cloud is the platform that allows you to install programs such as Adobe Acrobat, Photoshop, Premiere Pro, etc.

You are allowed to sign-in on up to 2 devices with the Adobe Creative Cloud using your RSCCD email address, whether on a District-owned device or home device. Signing in to a 3rd device will prompt you to log out of one of your devices.

You will be able to sign-in and use the Adobe Creative Cloud for as long as you are an active faculty or staff member with an RSCCD email address.

NOTE: The Adobe Creative Cloud Desktop app is only compatible with Windows and Mac computer systems. At the time of this writing, Chromebooks do not support the full Creative Cloud Desktop App suite.

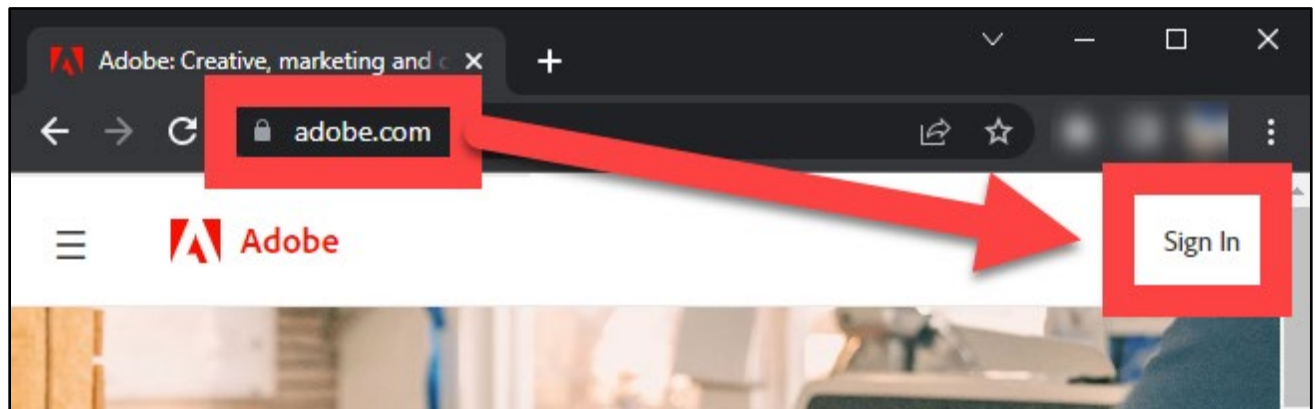
For further assistance, please contact the [ITS Help Desk](#).

Sign into the Adobe Website

Step 1 – Go to the Adobe website and select Sign In

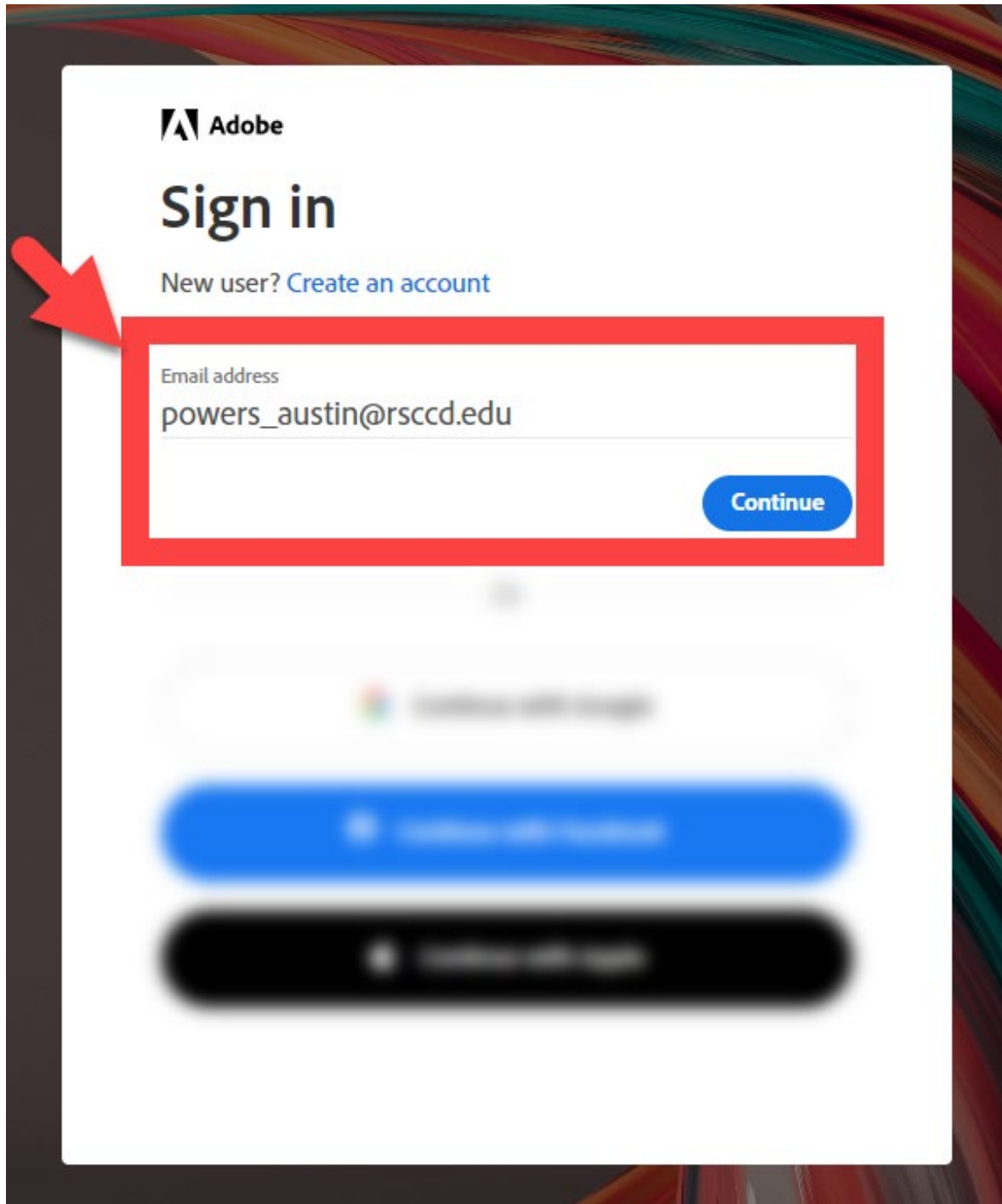
Open a web browser and go to www.adobe.com

Select **Sign In** on the top right of the page.



Step 2 – On the Sign In page, type in your District Email

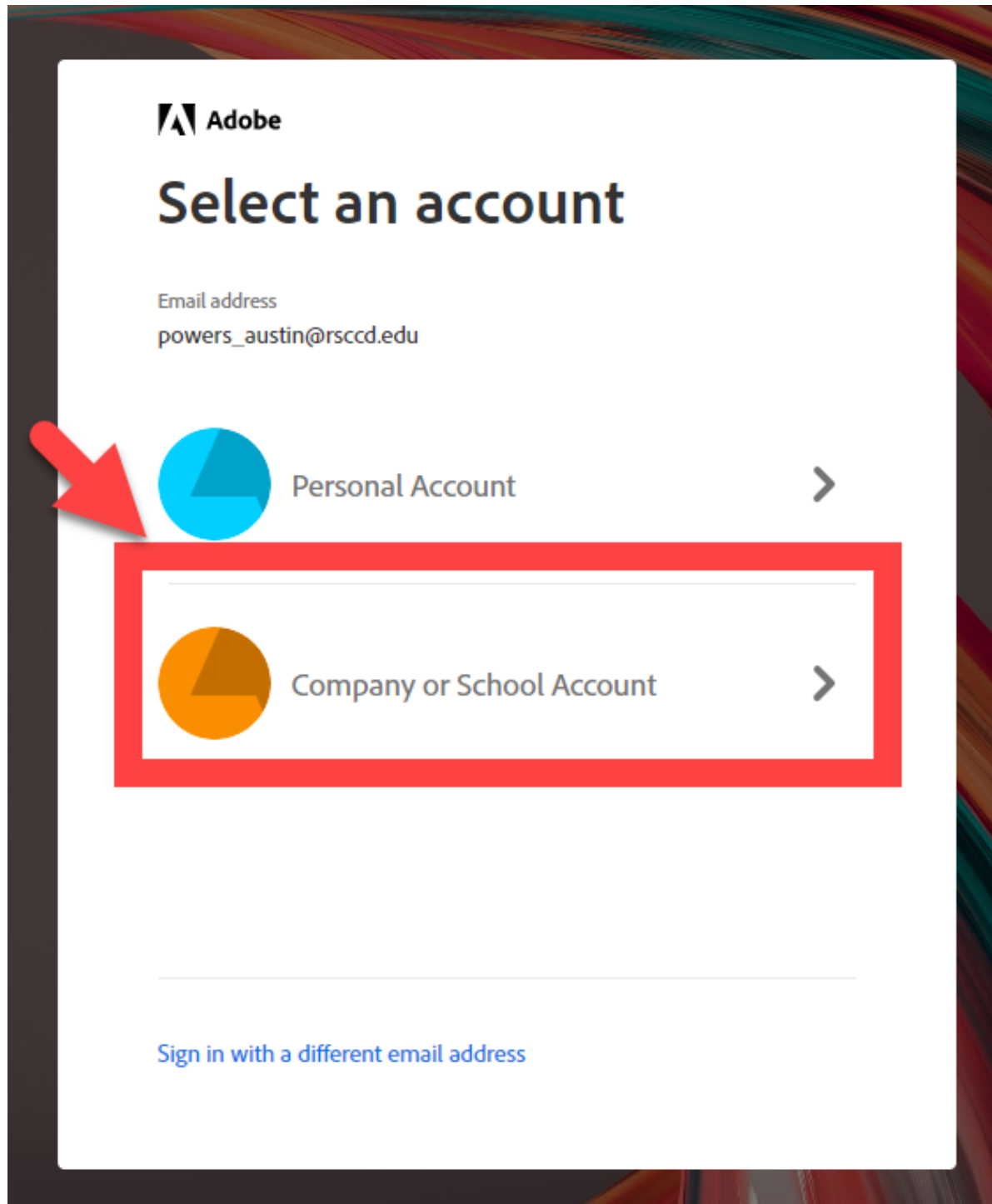
You will be redirected to the Sign In page for the Adobe.com website. **In the Email address field, type your district provided email address, then select the Continue button.**



The screenshot shows the Adobe Sign in page. At the top is the Adobe logo. Below it is the heading "Sign in". Under the heading is the text "New user? [Create an account](#)". A red arrow points to a red rectangular box that highlights the "Email address" input field. Inside this field, the email address "powers_austin@rsccd.edu" is entered. To the right of the input field is a blue "Continue" button. Below the input field and button, there are three blurred buttons: a white one with a Google logo, a blue one with a Microsoft logo, and a black one with an Apple logo.

Step 3 – Select Company or School Account

On the Select an account screen, select **Company or School Account**.



Step 4 - Sign In to RSCCD Single Sign-On

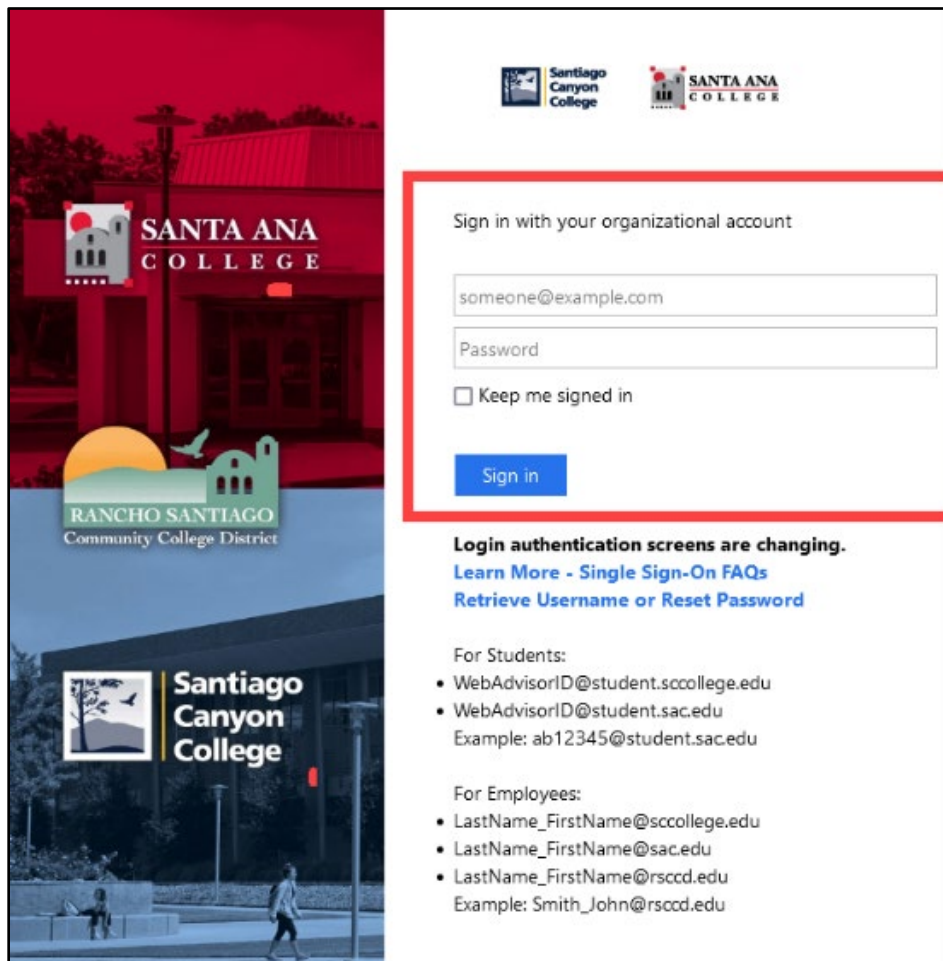
You will be redirected to the **Sign In** page for **RSCCD Single Sign-On**. Input your username and password, and click **Sign In**.

Optional: Check the box for "Keep me signed in" to stay signed in.

Your Username is your **college issued email address**.

- For Employees, the username format can be:
 - **LastName_FirstName@rsccd.edu**
 - **LastName_FirstName@sac.edu**, or
 - **LastName_FirstName@sccollege.edu**
 - Example: Powers_Austin@sac.edu

Your Password is the one associated with your school account (e.g., for Canvas and Self-Service).



Sign in with your organizational account

someone@example.com

Password

☐ Keep me signed in

Sign in

Login authentication screens are changing.
[Learn More - Single Sign-On FAQs](#)
[Retrieve Username or Reset Password](#)

For Students:

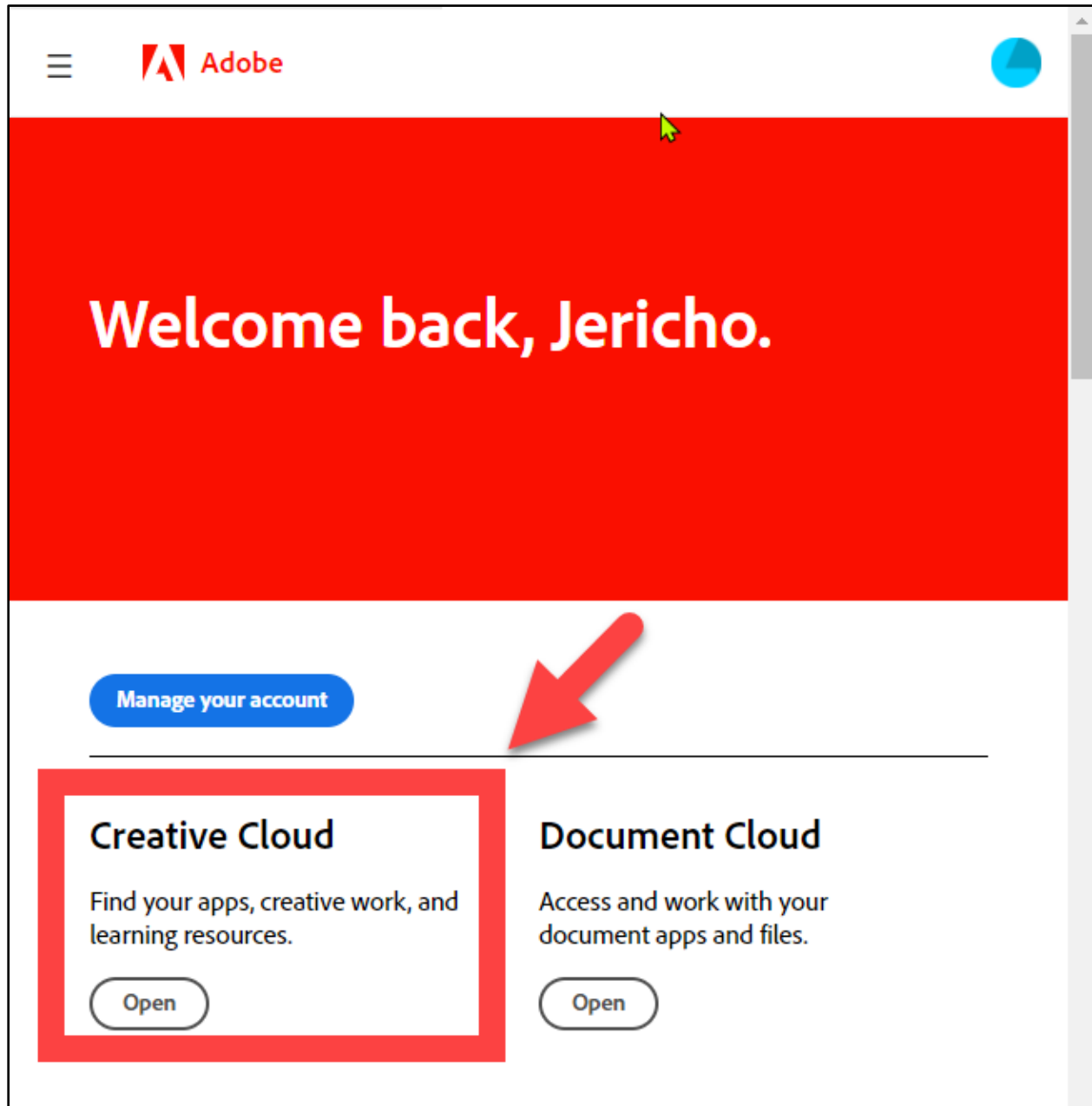
- WebAdvisorID@student.sccollege.edu
- WebAdvisorID@student.sac.edu
- Example: ab12345@student.sac.edu

For Employees:

- LastName_FirstName@sccollege.edu
- LastName_FirstName@sac.edu
- LastName_FirstName@rsccd.edu
- Example: Smith_John@rsccd.edu

Step 6 – Open the Creative Cloud Website

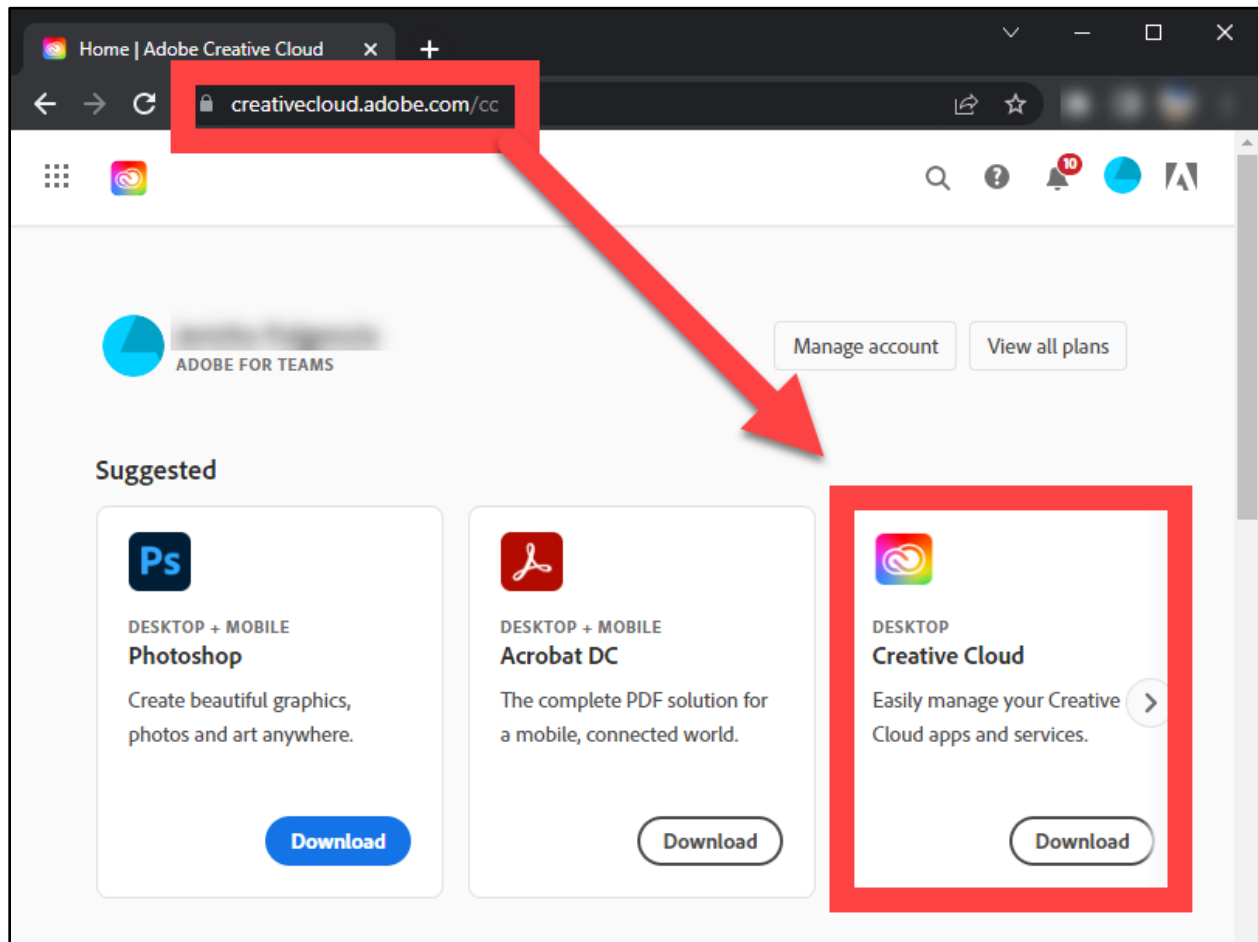
Once you are signed into the Adobe.com website, **scroll the Welcome back page for the Creative Cloud**, and select **Open**.



Install the Adobe Creative Cloud Desktop App

Step 7 – Download the Creative Cloud Desktop App

From the [Creative Cloud website](https://creativecommons.adobe.com/cc), find the Creative Cloud Desktop link and select Download.

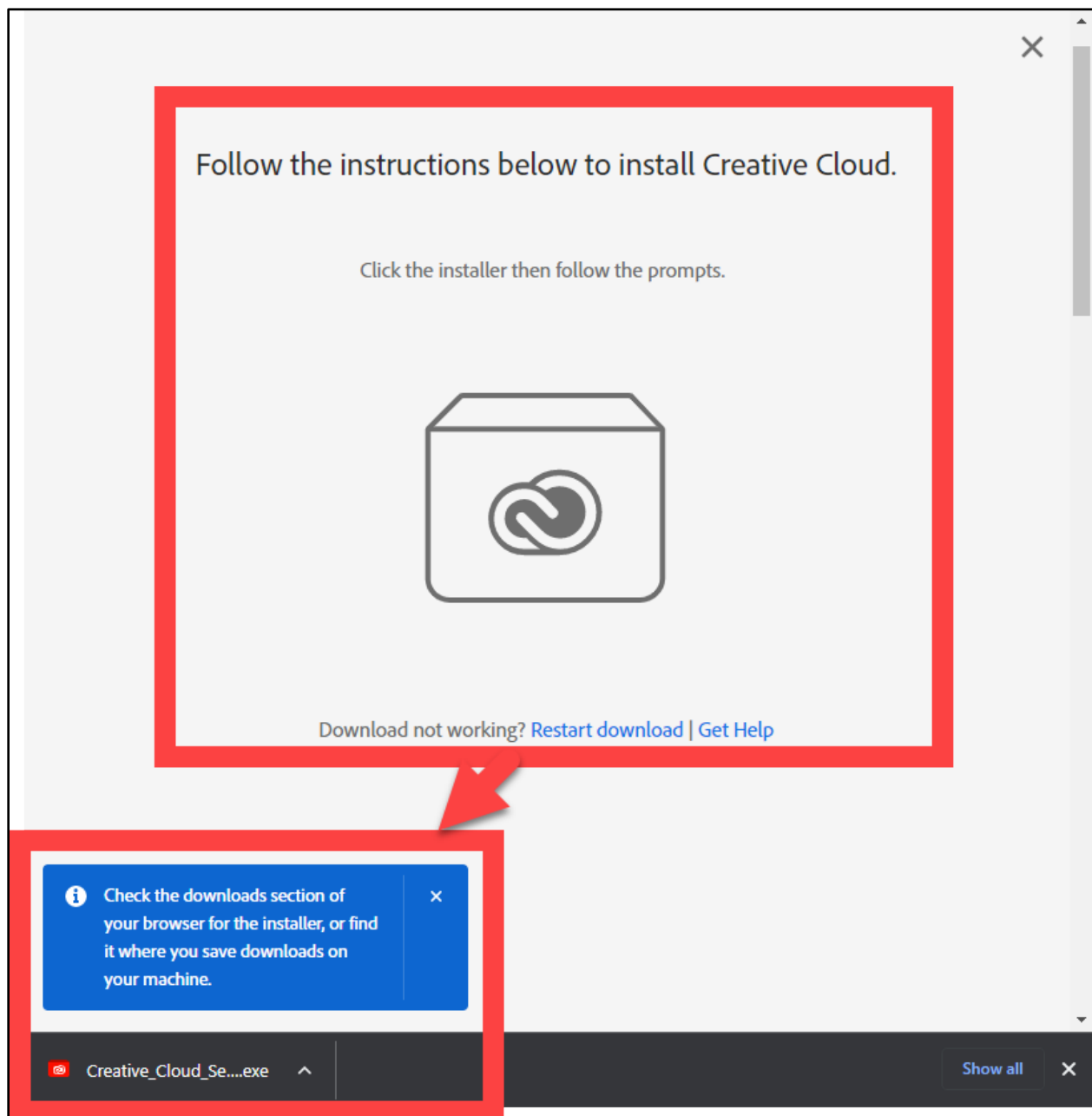


Step 8 – Install the Creative Cloud Desktop App

After selecting Download, you will be **redirected to a page to “Follow the instructions to install the Creative Cloud.”**

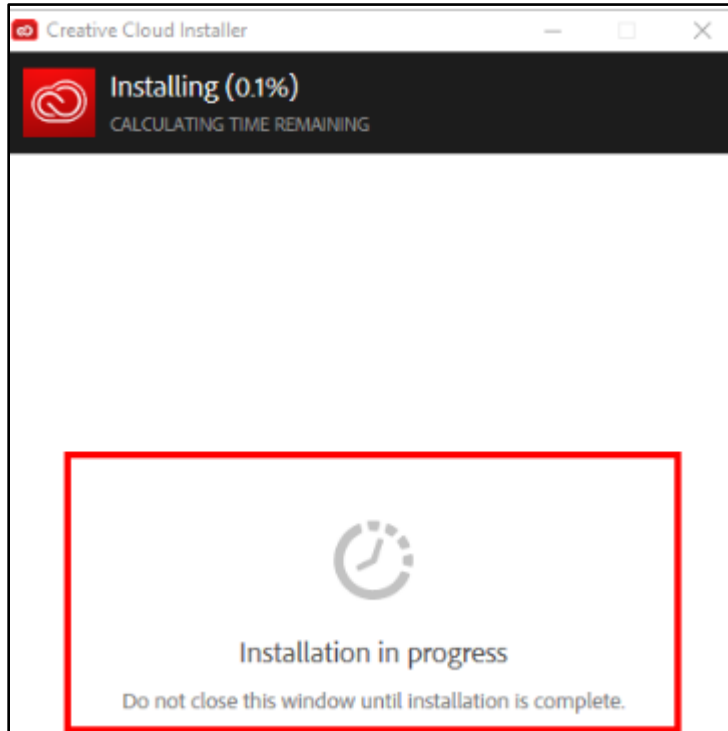
This page will also download the **Creative_Cloud_Set-Up.exe** file.

Open the Creative_Cloud_Set-Up.exe file, or follow the prompts on the page to help you find the file and open it.



Step 9 – Allow time for the Creative Cloud installer to Complete

After opening the **Creative_Cloud_Set-Up.exe** file, allow time for the “Installation in progress” screen to complete.

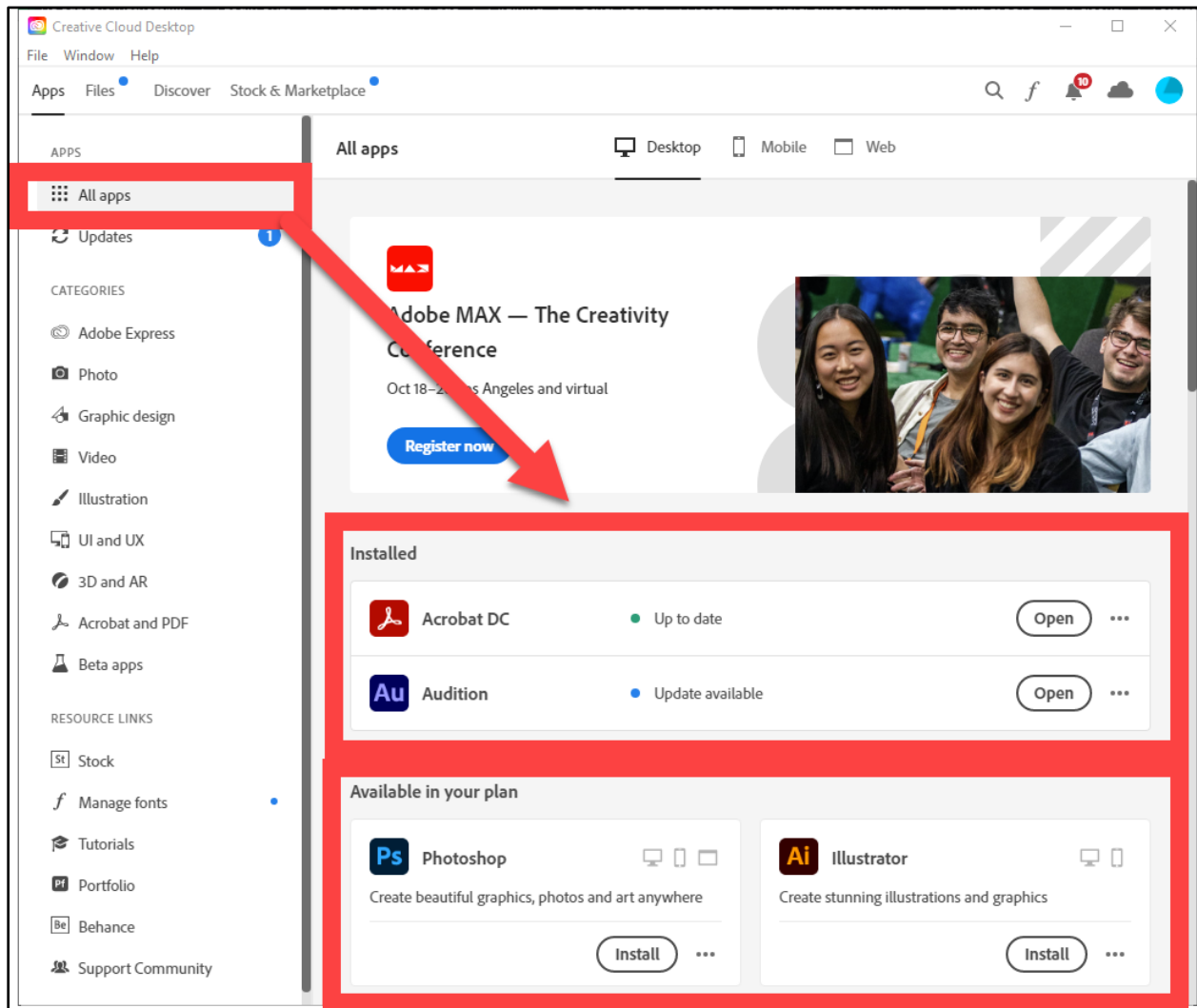


Step 10 – Enjoy using the Adobe applications

Once the Creative Cloud Desktop app is installed, it will open and take you to the All Apps menu.

Under **All Apps > Installed**, you will see all of the Adobe applications that have been previously installed on the computer.

Under **All Apps > Available in your plan**, you can see all of the apps available in your Adobe Creative Cloud plan, and Install as needed.



Troubleshooting problems

Troubleshooting sign-in problems

- Use the [Password Reset page](#) if you've forgotten your password, or need to retrieve your username.
- Use the [Change Password page](#) to create a new password.
- Read the [Single Sign-On FAQs page](#) for other sign in issues.

Contact the ITS Help Desk

- Website: <https://rsccd.edu/helpdesk>
- Phone: **714-564-4357** Extension 0
- Email: helpdesk@rsccd.edu

[\(Select this link to return to the beginning of the document\)](#)